

900 sf

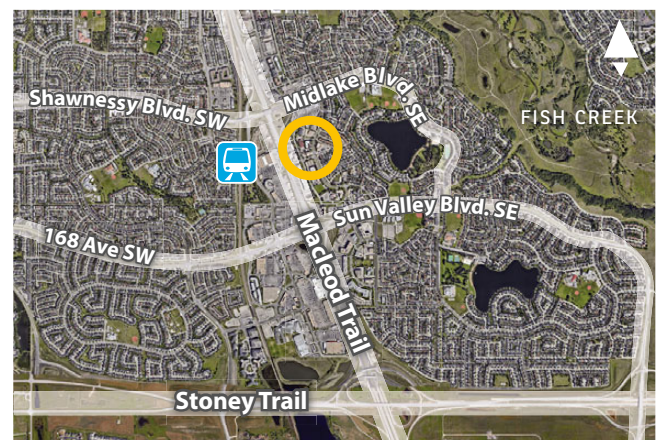
Suite 241



OFFICE SPACE FOR LEASE

Midpark Court
251 Midpark Boulevard SE, Calgary

» Easy access and egress to Macleod Trail and Stoney Trail.



FOR MORE
INFORMATION OR
TO VIEW, PLEASE
CONTACT:

Ian Robertson, ASSOCIATE

d: 587-393-9332

c: 403-860-2383

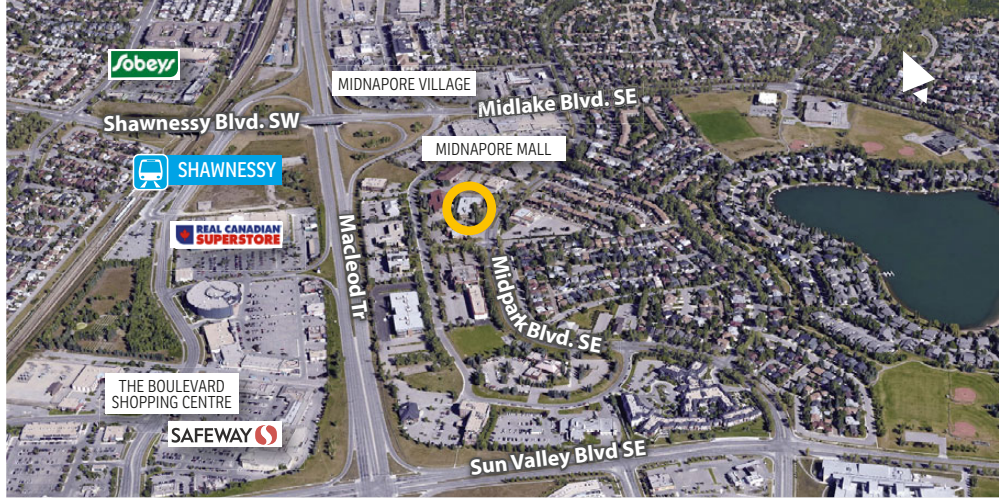
irobertson@barclaystreet.com



TCN
WORLDWIDE
REAL ESTATE SERVICES

LOCAL
EXPERTISE
MATTERS

- » Excellent Midpark office location directly east of Macleod Trail and south of Midnapore Mall.
- » Numerous amenities in the near vicinity including shops, cafes and restaurants
- » Easy access and egress to Macleod Trail and Stoney Trail.



LEASE INFORMATION

MUNICIPAL ADDRESS:
251 Midpark Boulevard SE, Calgary

AVAILABLE FOR LEASE:
900 sq. ft. – Suite 241

AVAILABILITY:
June 1, 2026

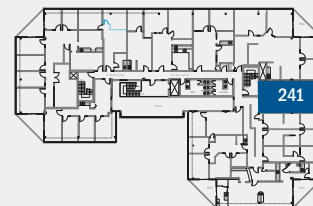
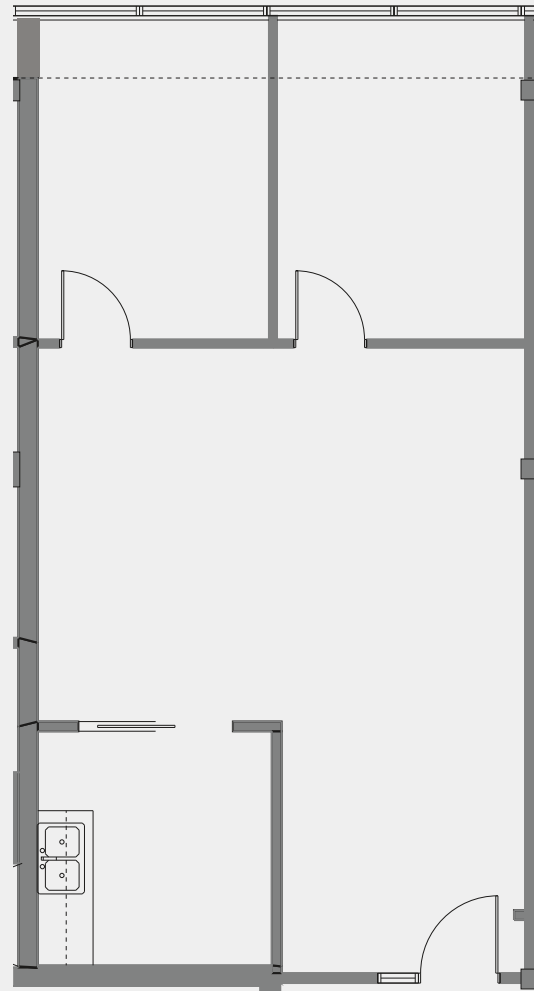
PARKING:
1 stall per 447 sq. ft., \$55/stall per mo.
Additional off-site stalls available at no charge

OP. COSTS & TAXES:
\$16.87 (est., 2026)

NET RENT: Market

SUITE 241
900 SQ.FT.

- LED Lighting



MIDPARK BLVD

The information contained herein has been gathered from sources deemed reliable, but is not warranted as such and does not form any part of any future contract. This offering may be altered or withdrawn at any time without notice.

Copyright © 2026 Barclay Street Real Estate Ltd. All rights reserved.

