

77.33 acres

Belvedere
Golf and
Country Club

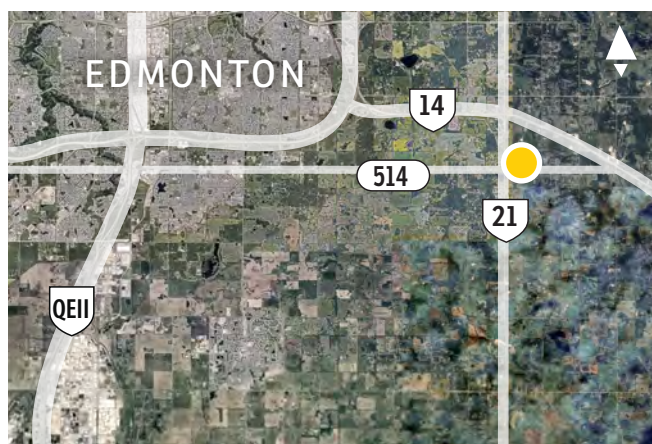
21

SUBJECT

514

LAND FOR SALE

Northeast corner of Highway 21
and Township Rd 514,
Strathcona County, AB



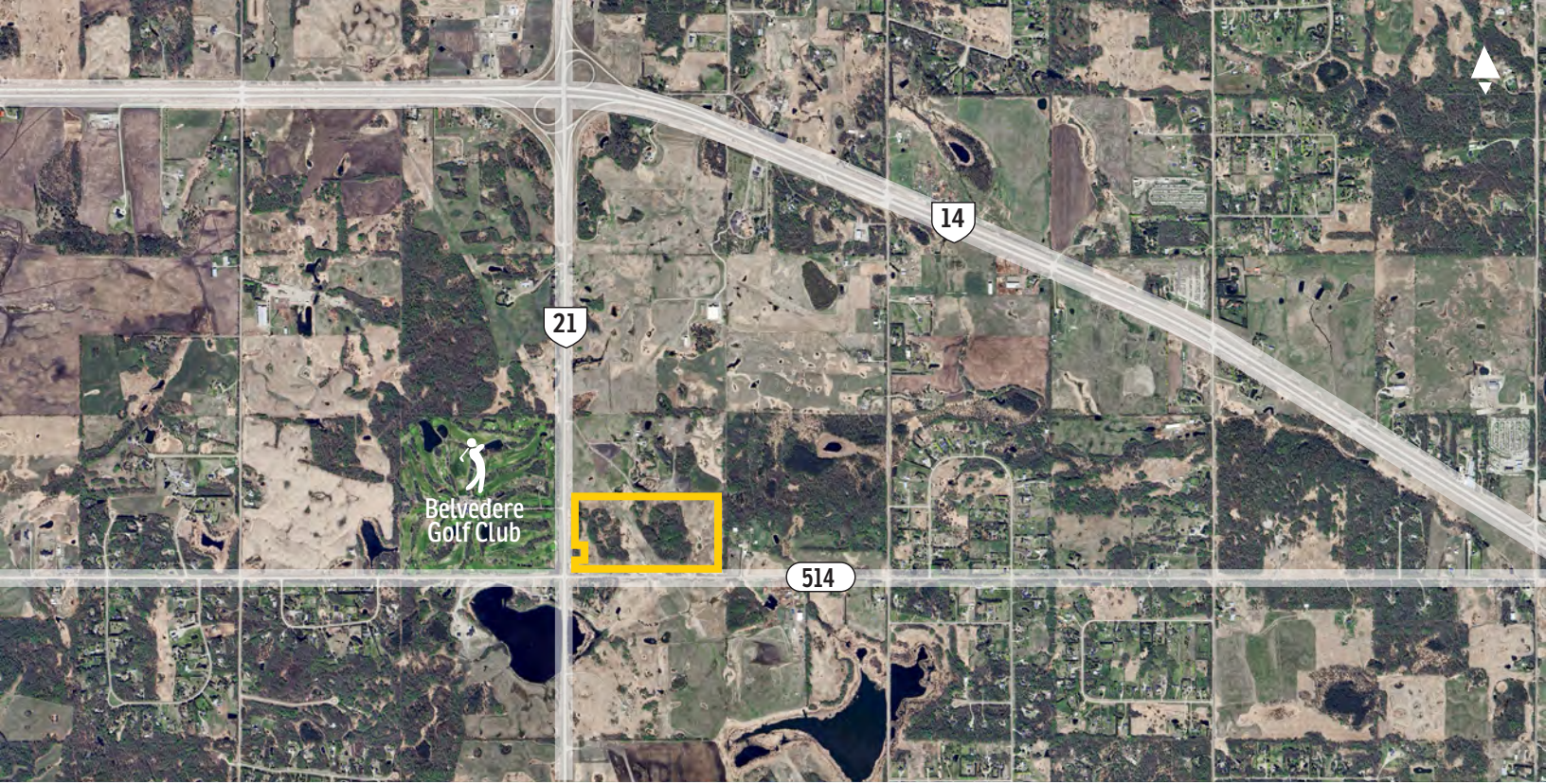
FOR MORE
INFORMATION OR
TO VIEW, PLEASE
CONTACT:

Doug Grinde, VICE PRESIDENT, INVESTMENT SALES
c: 403-815-0283
o: 780-463-3332
dgrinde@barclaystreet.com

**BARCLAY
STREET**
REAL ESTATE

TCN
WORLDWIDE
REAL ESTATE SERVICES

LOCAL
EXPERTISE
MATTERS



PROPERTY INFORMATION

MUNICIPALITY: Strathcona County

LOCATION:
Northeast corner of Highway 21 and
Township Rd 514.

ZONING: AG – Agriculture General

LAND AREA: 77.33 acres

COMMENTS:

- » The land falls within the Strathcona County Agriculture Small Holdings Policy Area
- » An oil pipeline and gas pipeline right of way cross the land
- » Further subdivision of the land is possible – minimum size 20 acres.
- » A historical approach to the highway exists on the west side
- » The land has been used as pasture/ grazing.

PRICE: \$800,000



Subject land



Oil pipeline and gas pipeline right of way

The information contained herein has been gathered from sources deemed reliable, but is not warranted as such and does not form any part of any future contract. This offering may be altered or withdrawn at any time without notice.

Copyright © 2025 Barclay Street Real Estate Ltd. All rights reserved.

